

Weekly ops need a short list of fields that look unusual enough to check first.

**Main takeaway:** use this before the weekly field check to choose 3-5 fields or zones for review, field-team questions, and source/date limits.

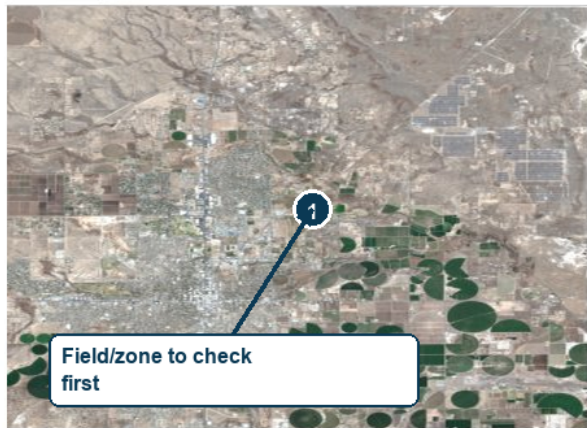
Input  
Field list/boundaries

Use before  
Weekly ops/agronomy check-in

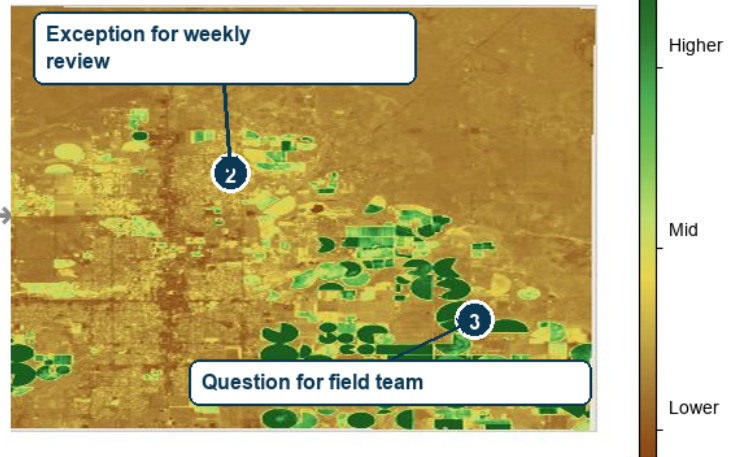
Output  
3-5 field exceptions

Limit  
Not a crop dashboard or diagnosis

## RGB satellite view



## Vegetation signal



### Weekly exception list

- Weekly exception list for fields/zones that deserve eyes first.
- Compare each exception against crop stage, irrigation, weather, and operator notes.
- Use alongside existing dashboards; do not replace agronomy tools.

### Ops check-in questions

- Which 3-5 fields or zones get checked first this week?
- Does the operator's report explain the visible pattern?
- What local context is needed before any operations or agronomy decision?

### How to use with existing tools

- Use before the weekly ops, agronomy, or field-team check-in.
- Compare each exception with crop stage, irrigation, weather, planting date, and operator notes.
- Use as operations triage, not a crop monitoring platform or diagnosis.

### Weekly exception brief includes

- 3-5 fields or zones that look unusual enough to review.
- Aerial/satellite date/source notes and confidence limits.
- Field-team questions for the next ops/agronomy check-in.

**Guardrail:** Operations prep only; not crop diagnosis, cause analysis, yield forecast, input recommendation, or replacement for agronomy tools.

### Limits

Demo sample only. Shows satellite-visible field exceptions and questions for operations review. Not crop diagnosis, cause analysis, pest/disease conclusion, irrigation conclusion, yield forecast, input recommendation, or proof of actual field condition.