

Visual context before a field/crop collateral site visit.

Main takeaway: lower-signal zones are visible; use them as pre-visit photo/check points, not collateral verification.

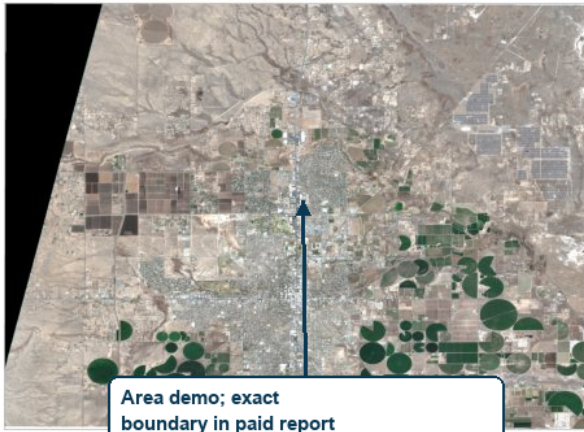
Field
Roswell NM farmland area - variability demo

Signal
Mixed vegetation signal

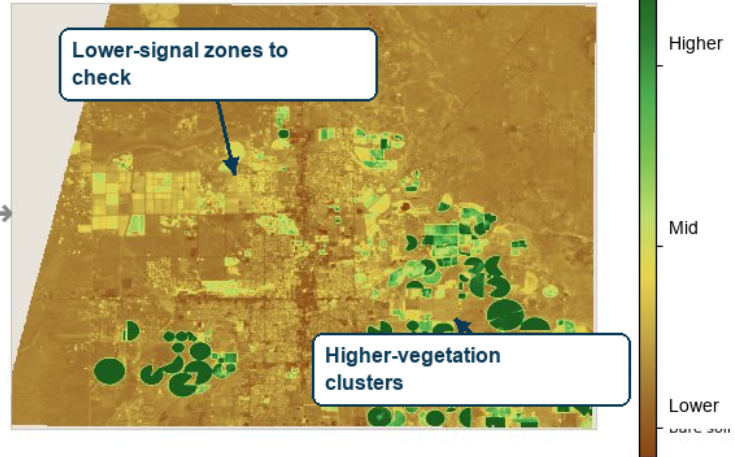
Date
Sentinel-2 visual: 2026-03-25

Boundary
Area-level demo; paid: exact boundary

RGB satellite view



Vegetation signal



Observed patterns

- The visual shows mixed vegetation signal across the farmland area.
- Lower-signal areas can become suggested photo/check points for a site visit.
- The snapshot helps prepare questions; it does not verify collateral status by itself.

Questions to check

- Which lower-signal areas should be photographed or checked first on-site?
- Does the borrower/operator have an expected explanation for the variation?
- Are borrower-provided field IDs and exact boundaries available before final review?

How to use this

- Use before a site visit to prioritize what to verify visually.
- Add the questions below to the pre-visit notes.
- Treat it as visual preparation, not a site-visit result.

What paid version adds

- Exact field or parcel boundary, not area-level demo.
- Time series for the selected field.
- Source/date/boundary notes for defensibility.

Guardrail: Do not use this as collateral verification, site inspection, or lender-decision material.

Limits

Demo sample only. Shows satellite-visible areas to prepare questions and photo/check points. Not a site inspection, collateral verification, or credit/investment decision.